

Bock F5

Specifications

Merk	Bock
Type	F5
Koudemiddel	Freon
kW at +10°C/+40°C	83.33
kW at 0°C/+40°C	59.40
kW at -5°C/+40°C	49.15
kW at -10°C/+40°C	40.01
kW at -20°C/+40°C	24.94
kW at -30°C/+40°C	13.98
kW at -40°C/+40°C	6.89
kW at -45°C/+40°C	4.72
Op stalen frame	✓
Druk veiligheids schakelaars	✓
Manometers	✓
Vloeistof tank	✓
Vloeistof tank ltr.	39
Filter droger	✓
Kijk glas	✓
Opmerkingen	# // Electromotor: 15 (3x) 16 (1x) kW / 1445 (3x) 1455 (1x) RPM // Pulley EM: 180 // Compr: 230
Opmerkingen	R404a - R22 or other freon types
Package / Rack	✓

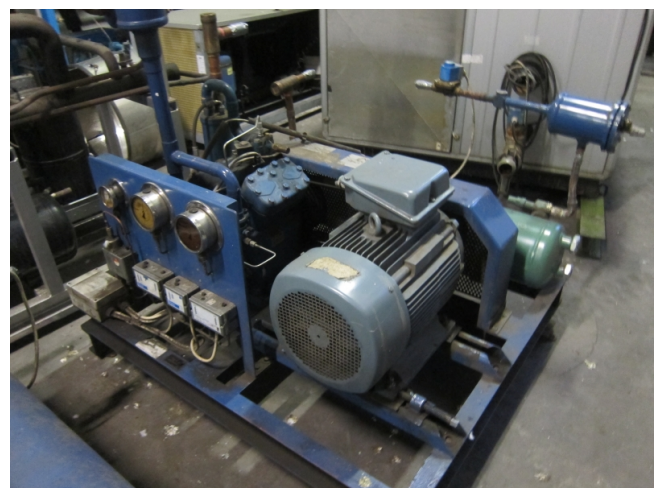
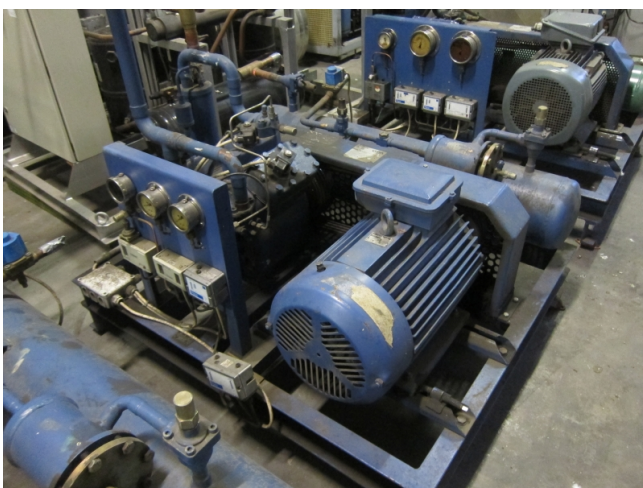
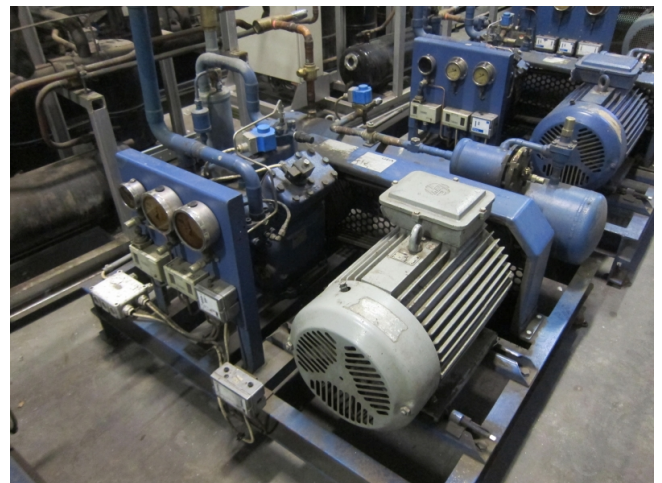


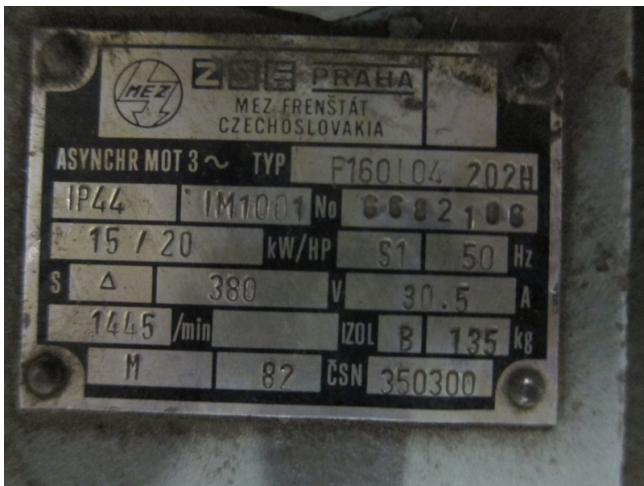
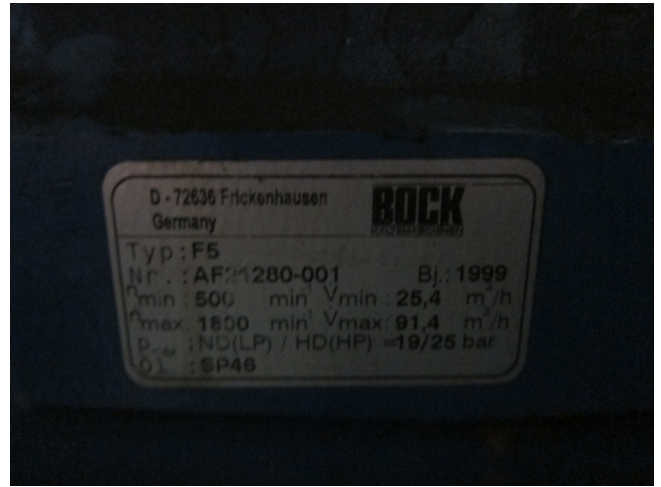
Afmetingen	1200x1100x1300 mm (LxWxH)
Stock	4

Description

Used Bock F5

Gebruikt Bock F5 freon compressorrek, compleet met drukveiligheidsschakelaars, manometers, vloeistofleiding filterdroger, kijkglas en vloeistofvat met een inhoud van 39 liter.





R404A/R507		Performance data											1.450 rpm														
Type	Cond. temp. °C	Cooling capacity \dot{Q}_s [W]											Power P [kW]														
		10	5	0	-5	-10	-15	-20	-25	-30	-35	-40	-45	10	5	0	-5	-10	-15	-20	-25	-30	-35	-40	-45		
FX2	30	Q	13423	11418	9621	8020	6606	5366	4290	3366	2584	1933	1402	979	P	2.21	2.19	2.13	2.05	1.94	1.80	1.65	1.48	1.31	1.12	0.94	0.75
	40	Q	11561	9785	8201	6797	5562	4485	3555	2761	2092	1537	1085	724	P	2.65	2.56	2.44	2.30	2.13	1.95	1.76	1.55	1.34	1.12	0.91	0.70
	50	Q	9652	8113	6749	5548	4500	3593	2816	2159	1609	1157	791	P	3.03	2.88	2.71	2.51	2.30	2.07	1.83	1.59	1.34	1.10	0.86	0.66	
FX3	30	Q	28402	24165	20377	17011	14041	11442	9187	7251	5608	4231	3096	2175	P	3.92	3.87	3.84	3.83	3.86	3.84	3.87	3.88	3.86	3.82	3.76	3.67
	40	Q	24498	20763	17437	14495	11911	9657	7710	6042	4628	3442	2458	1650	P	4.97	4.85	4.66	4.41	4.11	3.77	3.40	3.01	2.61	2.21	1.83	1.46
	50	Q	20984	17356	14498	11985	9791	7889	6254	4860	3680	2690	1862	P	5.90	5.62	5.28	4.89	4.47	4.02	3.56	3.08	2.61	2.15	1.72	1.31	
FX4	30	Q	53909	45826	38585	32117	26393	21373	17019	13292	10151	7559	5476	3862	P	8.34	8.30	8.09	7.73	7.23	6.68	6.04	5.36	4.66	3.96	3.29	2.69
	40	Q	46772	39538	33069	27326	22270	17862	14063	10834	8135	5928	4173	2832	P	10.09	9.75	9.27	8.67	7.98	7.21	6.41	5.59	4.78	4.00	3.27	2.63
	50	Q	39157	32814	27179	22214	17880	14137	10946	8268	6054	4295	2922	P	11.44	10.83	10.10	9.28	8.40	7.47	6.53	5.59	4.69	3.85	3.09	2.42	
FX5	30	Q	99054	81844	66053	51954	42020	34922	28933	23624	17768	12938	9105	6242	P	12.98	13.48	13.55	13.24	12.62	11.75	10.69	9.49	8.22	6.94	5.70	4.57
	40	Q	85230	70884	58401	46154	37952	30849	24963	19961	14961	10961	7428	5028	P	15.87	15.64	15.05	14.03	12.72	11.28	9.79	8.29	6.85	5.53	4.29	
	50	Q	70427	59251	49183	40194	32258	25345	19428	14480	10472	7377	5168	P	20.21	19.31	18.12	16.70	15.11	13.41	11.67	9.93	8.26	6.73	5.38		
FX14/1166	30	Q	131605	112604	95281	79598	65318	53000	42008	32503	24447	17801	12327	8587	P	17.86	18.55	18.64	18.22	17.37	16.17	14.71	13.06	11.32	9.55	7.85	6.29
	40	Q	114050	97588	81127	67628	55054	43966	34506	26099	19237	13711	9460	6506	P	23.21	22.89	22.08	20.86	19.30	17.49	15.52	13.47	11.41	9.43	7.61	6.04
	50	Q	96896	81531	67668	55301	44382	34871	26720	19922	14468	10150	7110	P	27.80	26.56	24.92	22.97	20.79	18.45	16.05	13.66	11.37	9.25	7.40		
FX14/1366	30	Q	154448	132149	111819	93414	76889	62199	49299	38144	28690	20890	14701	10078	P	20.96	21.77	21.87	21.38	20.38	18.98	17.26	15.33	13.28	11.21	9.21	7.38
	40	Q	134550	114291	95912	79366	64609	51997	40284	30623	22575	16091	11125	7635	P	25.12	24.21	22.84	20.86	18.22	15.63	13.45	11.56	9.76	8.00	6.40	